

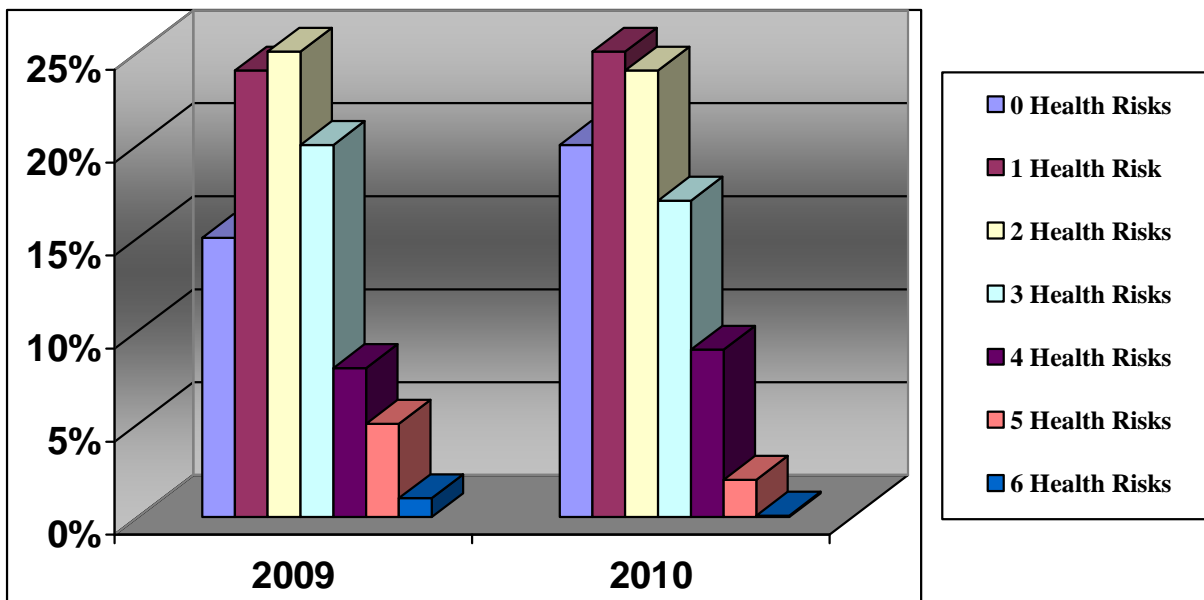
Executive Summary
Lipid Panel, Blood Pressure and Glucose
For:

Provided by:



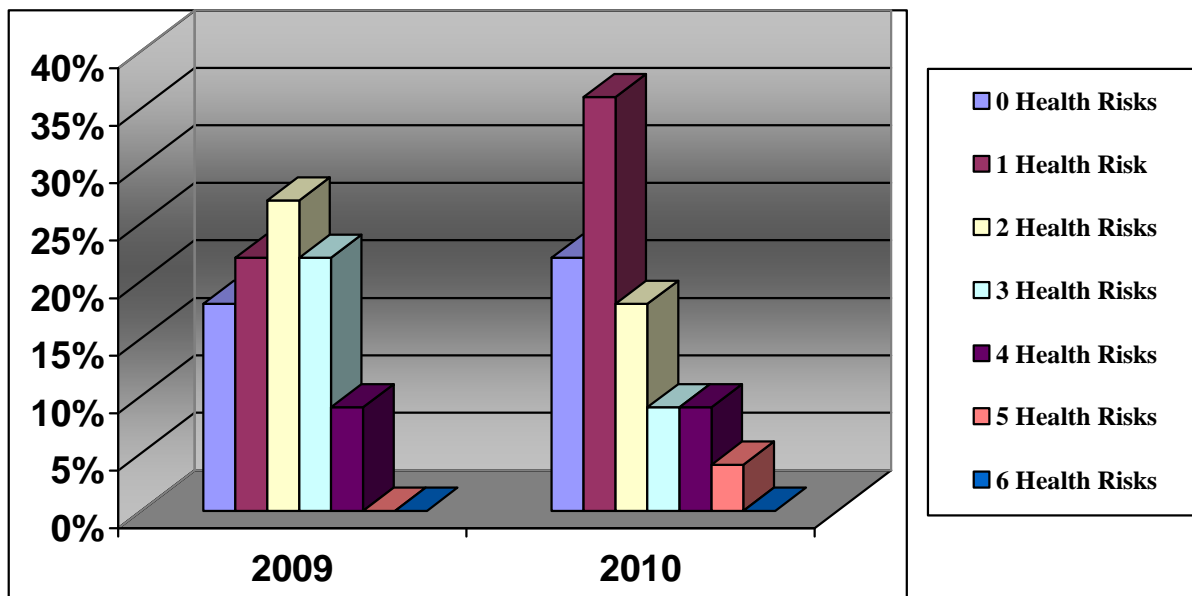
We at SOAR, Inc wish to express our appreciation for the opportunity to work with your great company and your wellness program. We commend you for your proactive thinking and approach to managing employee health care. Following are the results of the 2010 Wellness testing in addition to a comparison of the results from 2009.

Company Wide Totals	2009	2010
Total # of Employees and Spouses Tested	212	284
Total of Employees with 0 Health Risks	33 (15%)	57 (20%)
Total of Employees with 1 Health Risk	52 (24%)	72 (25%)
Total of Employees with 2 Health Risks	54 (25%)	69 (24%)
Total of Employees with 3 Health Risks	44 (20%)	50 (17%)
Total of Employees with 4 Health Risks	18 (8%)	26 (9%)
Total of Employees with 5 Health Risks	12 (5%)	7 (2%)
Total of Employees with 6 Health Risks	4 (1%)	2 (07%)

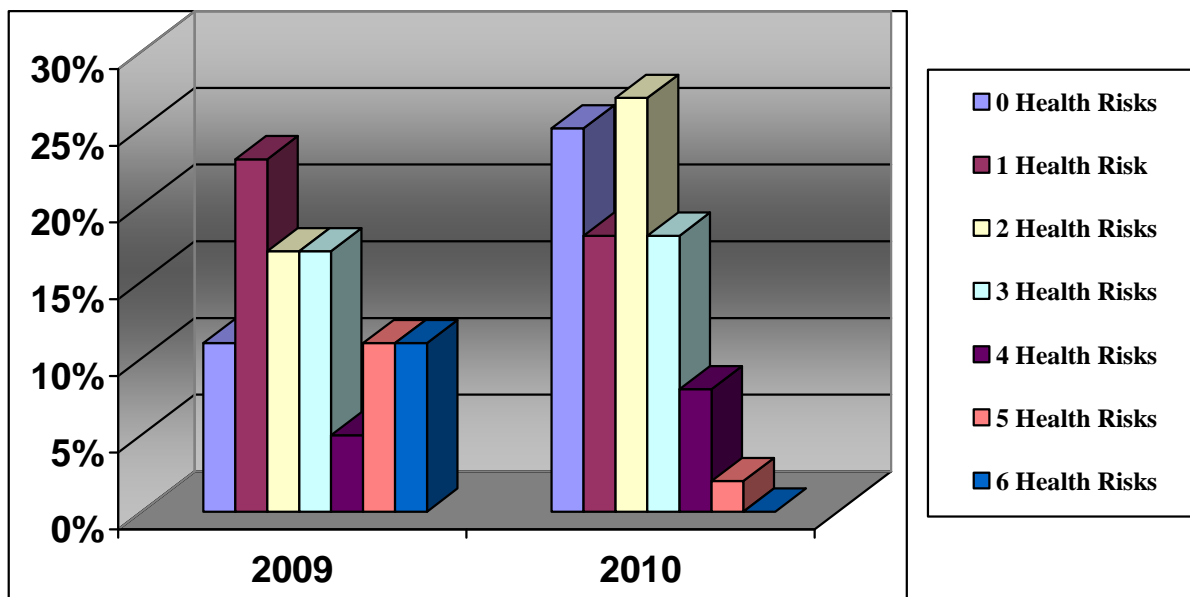


The following is a report for each location:

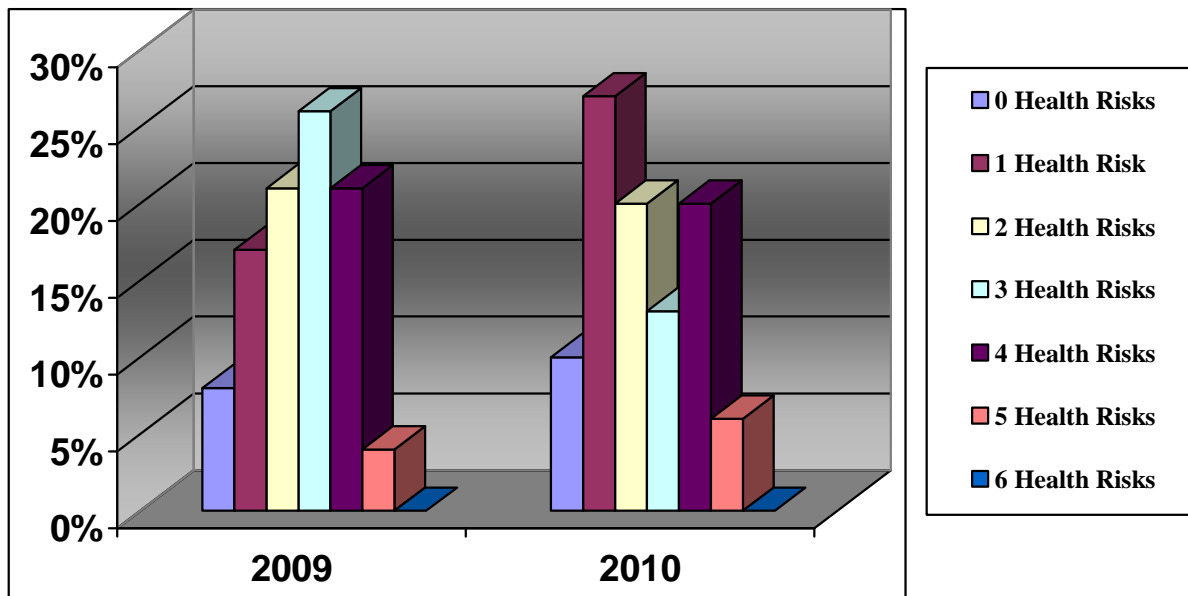
Corporate	2009	2010
Total # of Employees and Spouses Tested	22	22
Total of Employees with 0 Health Risks	4 (18%)	5 (22%)
Total of Employees with 1 Health Risk	5 (22%)	8 (36%)
Total of Employees with 2 Health Risks	6 (27%)	4 (18%)
Total of Employees with 3 Health Risks	5 (22%)	2 (.09%)
Total of Employees with 4 Health Risks	2 (9%)	2 (9%)
Total of Employees with 5 Health Risks	0	1 (4%)
Total of Employees with 6 Health Risks	0	0



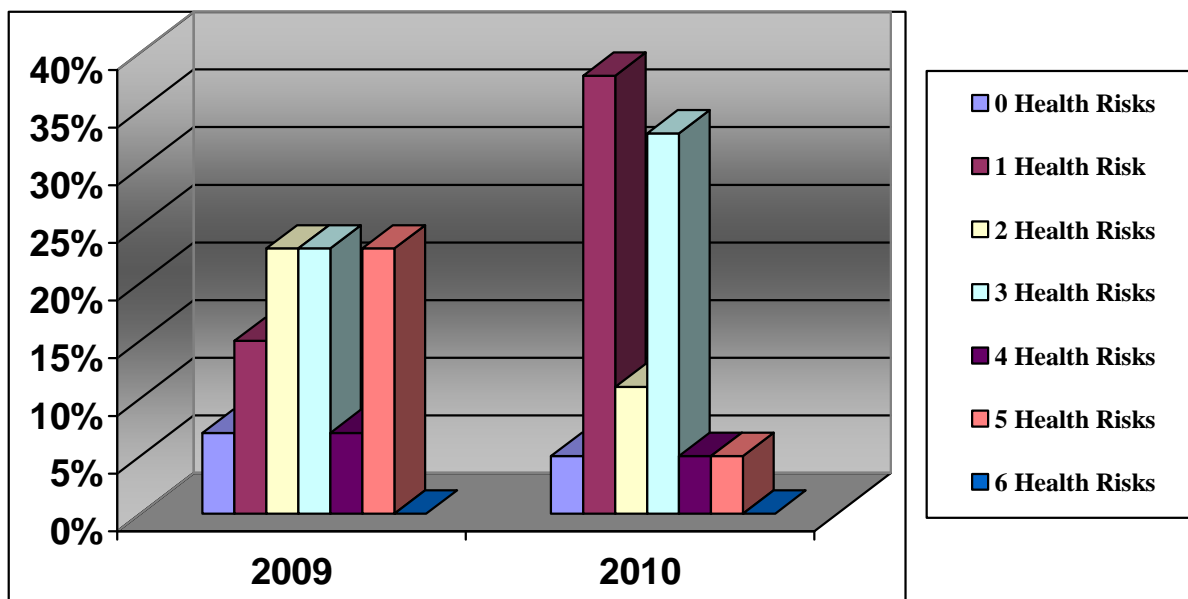
Location 1	2009	2010
Total # of Employees and Spouses Tested	34	48
Total of Employees with 0 Health Risks	4 (11%)	12 (25%)
Total of Employees with 1 Health Risk	8 (23%)	9 (18%)
Total of Employees with 2 Health Risks	6 (17%)	13 (27%)
Total of Employees with 3 Health Risks	6 (17%)	9 (18%)
Total of Employees with 4 Health Risks	2 (5%)	4 (8%)
Total of Employees with 5 Health Risks	4 (11%)	1 (2%)
Total of Employees with 6 Health Risks	4 (11%)	0



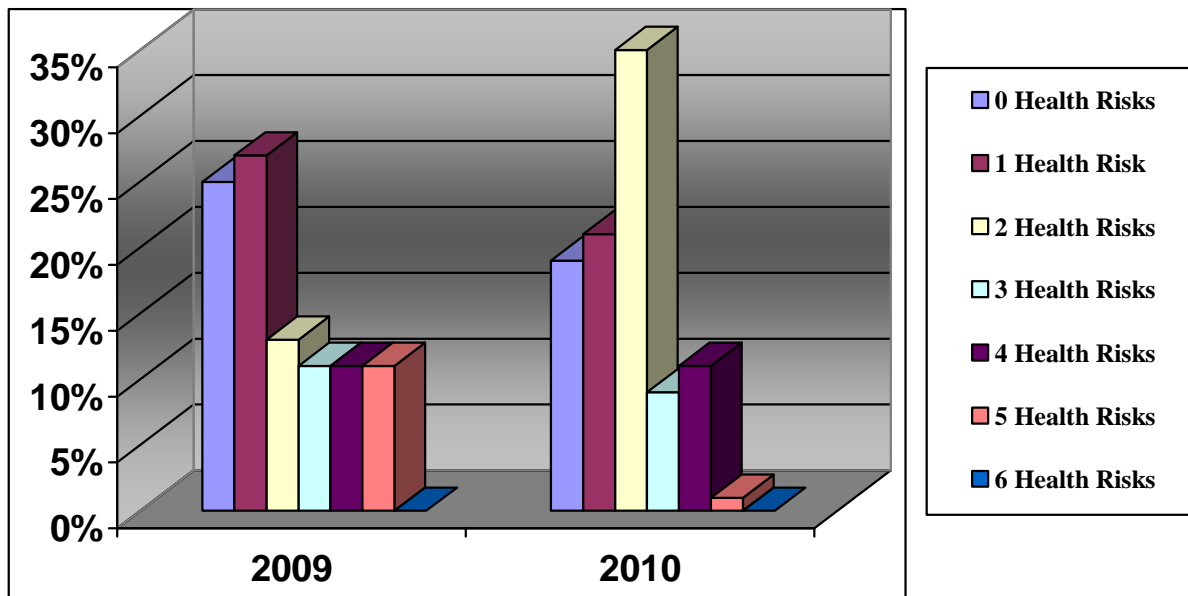
Location 2	2009	2010
Total # of Employees and Spouses Tested	23	29
Total of Employees with 0 Health Risks	2 (8%)	3 (10%)
Total of Employees with 1 Health Risk	4 (17%)	8 (27%)
Total of Employees with 2 Health Risks	5 (21%)	6 (20%)
Total of Employees with 3 Health Risks	6 (26%)	4 (13%)
Total of Employees with 4 Health Risks	5 (21%)	6 (20%)
Total of Employees with 5 Health Risks	1 (4%)	2 (6%)
Total of Employees with 6 Health Risks	0	0



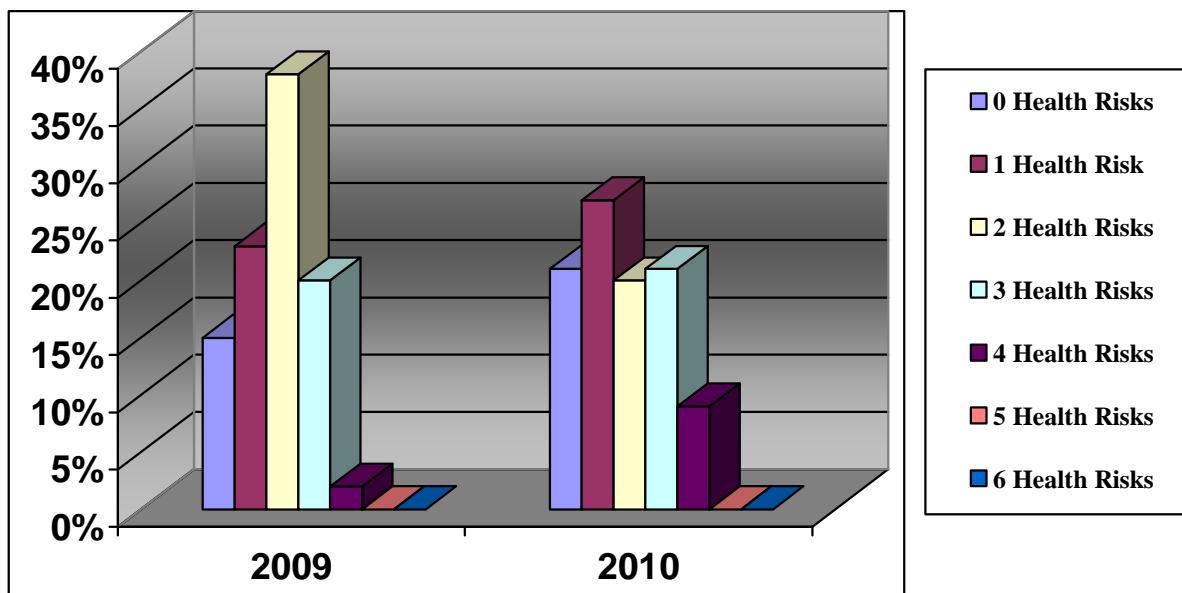
Location 3	2009	2010
Total # of Employees and Spouses Tested	13	18
Total of Employees with 0 Health Risks	1 (7%)	1 (5%)
Total of Employees with 1 Health Risk	2 (15%)	7 (38%)
Total of Employees with 2 Health Risks	3 (23%)	2 (11%)
Total of Employees with 3 Health Risks	3 (23%)	6 (33%)
Total of Employees with 4 Health Risks	1 (7%)	1 (5%)
Total of Employees with 5 Health Risks	3 (23%)	1 (5%)
Total of Employees with 6 Health Risks	0	0



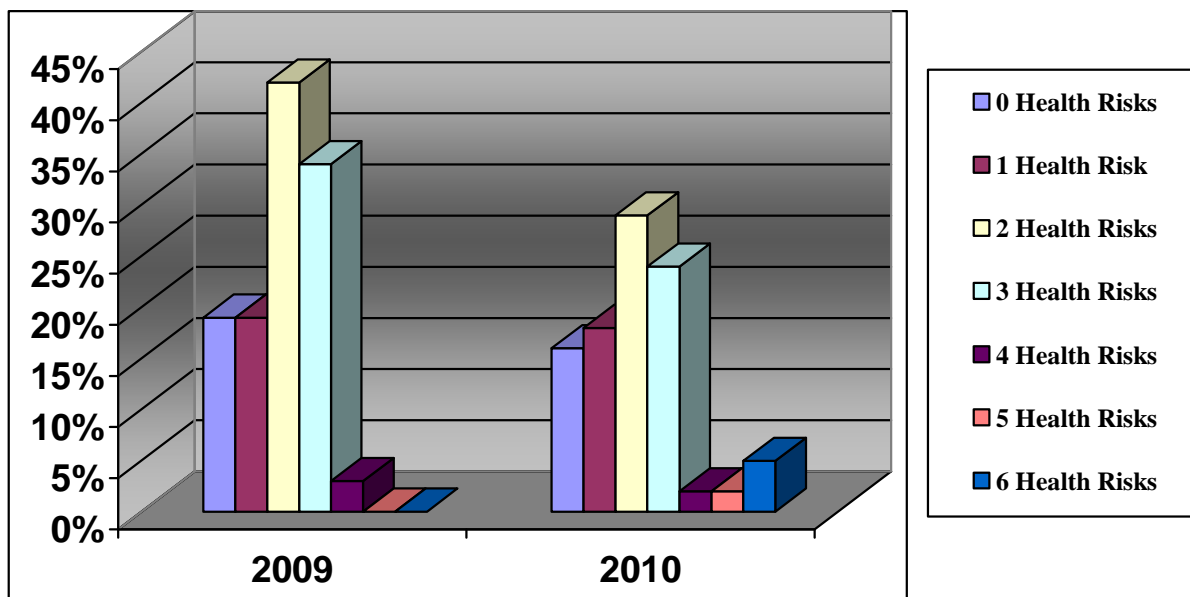
Location 4	2009	2010
Total # of Employees and Spouses Tested	36	51
Total of Employees with 0 Health Risks	9 (25%)	10 (19%)
Total of Employees with 1 Health Risk	10 (27%)	11 (21%)
Total of Employees with 2 Health Risks	5 (13%)	18 (35%)
Total of Employees with 3 Health Risks	4 (11%)	5 (9%)
Total of Employees with 4 Health Risks	4 (11%)	6 (11%)
Total of Employees with 5 Health Risks	4 (11%)	1 (1%)
Total of Employees with 6 Health Risks	0	0



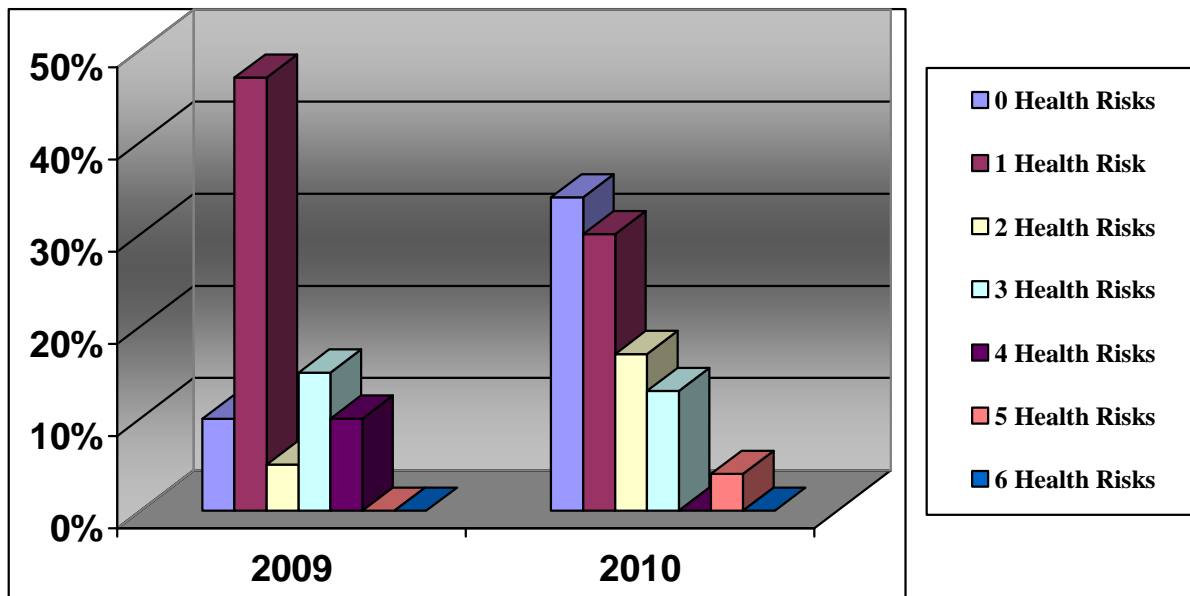
Location 5	2009	2010
Total # of Employees and Spouses Tested	39	55
Total of Employees with 0 Health Risks	6 (15%)	12 (21%)
Total of Employees with 1 Health Risk	9 (23%)	15 (27%)
Total of Employees with 2 Health Risks	15 (38%)	11 (20%)
Total of Employees with 3 Health Risks	8 (20%)	12 (21%)
Total of Employees with 4 Health Risks	1 (2%)	5 (9%)
Total of Employees with 5 Health Risks	0	0
Total of Employees with 6 Health Risks	0	0



Location 6	2009	2010
Total # of Employees and Spouses Tested	26	37
Total of Employees with 0 Health Risks	5 (19%)	6 (16%)
Total of Employees with 1 Health Risk	5 (19%)	7 (18%)
Total of Employees with 2 Health Risks	11 (42%)	11 (29%)
Total of Employees with 3 Health Risks	9 (34%)	9 (24%)
Total of Employees with 4 Health Risks	1 (3%)	1 (2%)
Total of Employees with 5 Health Risks	0	1 (2%)
Total of Employees with 6 Health Risks	0	2 (5%)



Location 7	2009	2010
Total # of Employees and Spouses Tested	19	23
Total of Employees with 0 Health Risks	2 (10%)	8 (34%)
Total of Employees with 1 Health Risk	9 (47%)	7 (30%)
Total of Employees with 2 Health Risks	3 (.5%)	4 (17%)
Total of Employees with 3 Health Risks	3 (15%)	3 (13%)
Total of Employees with 4 Health Risks	2 (10%)	0
Total of Employees with 5 Health Risks	0	1 (4%)
Total of Employees with 6 Health Risks	0	0



Of all of the locations 7 is the “**Healthiest**” with 64% of the group having only 0 to 1 health risk with the lipid panel, glucose level and blood pressure. They have also shown the most improvement from last year. Location 6 appears to have the **lowest scores** in over all health with only 34% of the group having less than 2 risks. They have also had an increase in over all average amounts of risks since last year.

In reviewing all of the test results that were submitted we identified approximately 63 individuals or approximately 22% of the total group that had scores that are of significant concern. It is our opinion that these individuals need further follow-up, monitoring and intervention of some kind.

It is important to note that the lipid panel, glucose and blood pressure screenings are only one piece of the puzzle when identifying the potential risks that can affect employee health care costs and productivity.

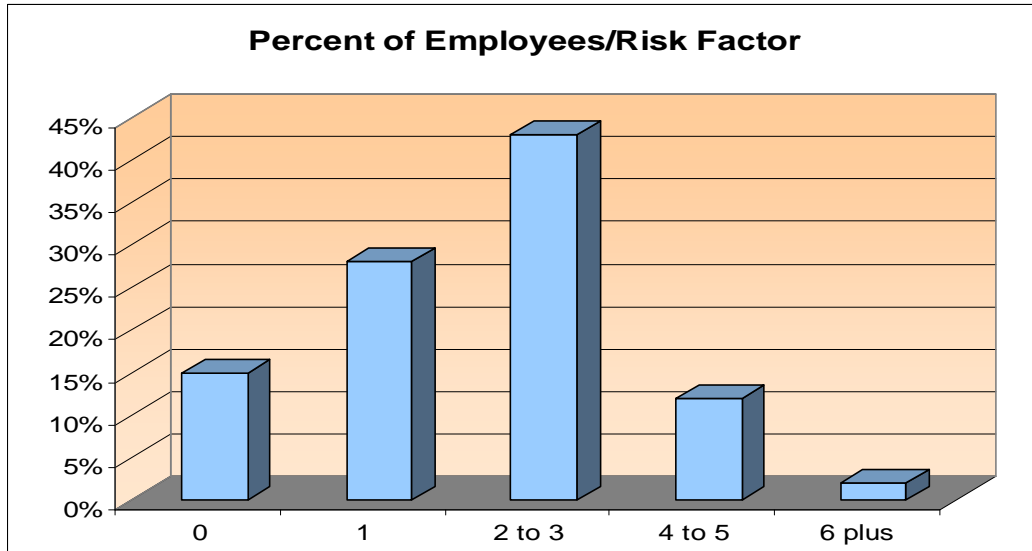
Path to Chronic Disease (Examples of Risks)

Life Style Habits	Psychological Perception	= Bio Physiological	= Disease
SMOKING	PHYSICAL HEALTH	BLOOD PRESSURE	HEART DISEASE
PHYSICAL ACTIVITY/ NUTRITION	LIFE SATISFACTION	CHOLESTEROL and TRYGLICERIDES	DIABETES
MEDICATION/ DRUG USAGE	JOB SATISFACTION	BLOOD GLUCOSE	CANCER
ALCOHOL USAGE	STRESS	RELATIVE BODY WEIGHT (BMI)	OTHER DISEASES

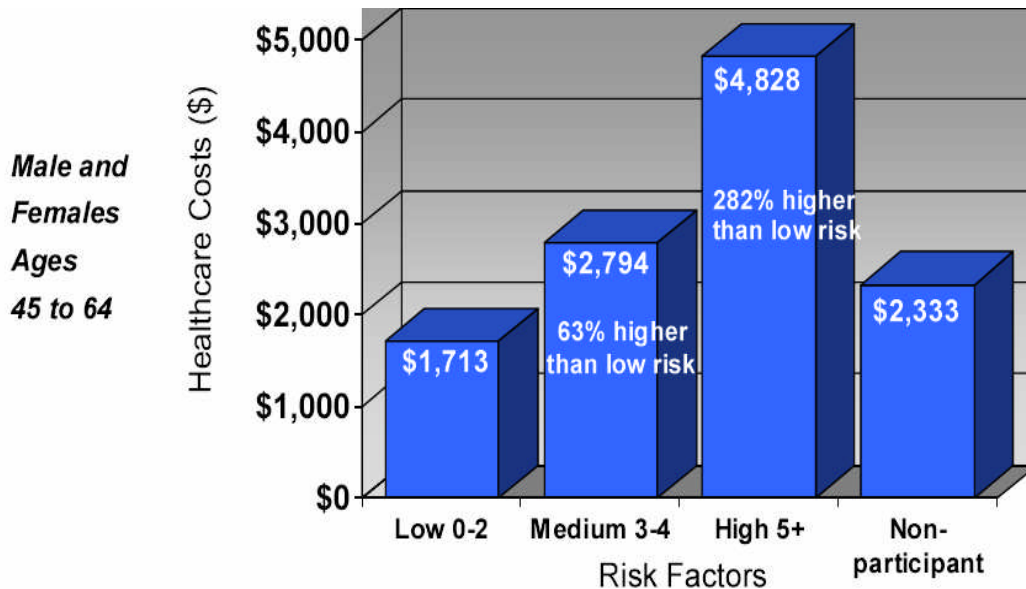
The Bio/Physiological and Disease columns are the “**what**”. The Lifestyle and Psychological Perception columns are the “**why**”. We know that if the “**what**” is left unaddressed, it will lead to disease. We also know that based on the scores, some disease may already be present. We do not know what disease is present or to what extent. What we need to know is the “**why**” so that we can effectively address the issues causing the risks that have been identified. Only then will we be able to slow, stop, or reverse the progression down the path to chronic disease, higher health care costs, and lost productivity.

Risks = Increased medical costs and decreased productivity.

National statistics state that without intervention most companies have **43%** of their group in the **2 to 3** risks category and **12%** in the **4 to 5** risk category. Cumulatively this places **55%** of most groups in the 2 to 5 risk category



A study conducted by the *University of Michigan Health Management & Research Center* identifies annual health care cost discrepancies among low medium and high risk individuals. **The more risks present, the higher the annual medical spending.**



As stated before, we know the “**What**”. At SOAR, Inc. we have many options, solutions and resources to determine the “**Why**”. Once we have determined the “**Why**” we can develop programs specific to your organization’s individual needs. We have resources to assist you in keeping the healthy employees healthy and programs to help the “at risk” employees to change lifestyle and behaviors in order to decrease risks.

We look forward to working together in developing ongoing solutions to keep your great employees as healthy as possible while being cost conscience and effective.

Shaun Bills
CEO and President

